

## MODEL 416

RUGGEDIZED  
CONDITIONER-AMPLIFIER

Model 416 front view.  
See specifications for size.

## GENERAL

The Model 416 is a transducer conditioner with a precision instrumentation amplifier for use in poor environmental conditions. Designed for use with almost any transducer, this conditioner-amplifier provides outstanding performance despite temperature extremes and high levels of shock and vibration.

Featuring complete ohmic isolation between the signal input, output, excitation, power supply, and case, it is a solid-state chopper-stabilized differential dc amplifier with an internal excitation voltage supply. The high input impedance permits operation with a large variety of signal sources; and the low output impedance allows operation into highly reactive loads, telemetry equipment and most recording and/or storage devices.

## STANDARD FEATURES

- The Model 416 conditioner-amplifier comes standard with the following features:
- Ruggedized for environmental extremes.
- $\pm 10$ -V amplifier output.
- $\pm 40$ -mV input zero suppression.
- Continuous gain in a 1-2-5 sequence from 10 to  $>2500$ .
- Customer-selectable excitation voltage.
- EMI/RFI filtering on all connector pins.
- Operation from any dc voltage from +10.5 to +32 V dc.
- All units 100% temperature tested over full operating range.



Model 416 rear view, with mating DAM-15S connector

## OPTIONAL FEATURES

There are two options for the Model 416:

- Option B  
The output is limited to 0 to +5 V.
- Option G  
The gain sequence is changed to binary (2-4-8 sequence) with gains from 16 to  $>2500$ .

# MODEL 416

RUGGEDIZED  
CONDITIONER-AMPLIFIER



All specifications apply with a fixed source resistance of 0 to 500 Ω in any unbalance over the temperature range of -25°C to +85°C unless otherwise specified. The following specifications are the maximum deviation allowed from ideal unless otherwise noted.

RTI = Referred to Input  
RTO = Referred to output

## INPUT

### CONFIGURATION

True differential with guard, transformer isolated. Can operate from isolated source.

**IMPEDANCE:** ≥ 1 MΩ

### SIGNAL SOURCE

**Normal-mode voltage (without damage)**

±17 V dc or peak ac maximum.

**Common-mode voltage (operating)**

±100 V dc or peak ac.

**Common-mode rejection (CMR)**

Dc, 100-Ω unbalance: ≥ 140 dB.

Ac, 60 Hz, balanced: ≥ 120 dB.

Ac, 60 Hz, 100-Ω

unbalance: ≥ 100 dB.

Ac, 400 Hz, balanced: ≥ 100 dB.

Ac, 400 Hz, 100-Ω

unbalance: ≥ 90 dB.

## NOISE

Noise specifications are stated with a statistical confidence of 3 sigma in peak voltage when measured in a first-order band-pass circuit with a lower frequency limit of 0.1 Hz and an upper limit as stated:

Frequency	RTI	RTO
10 Hz	≤ 1 μV	≤ 1 mV
300 kHz	≤ 5 μV	≤ 2.5 mV

## GAIN

### CONFIGURATION

#### Decade

Continuous gain from 10 to > 2500.

Screwdriver-adjustable front-panel rotary-gain-switch steps of 10, 20, 50, 100, 200, 500, and 1000.

Vernier (always active):

×1 to > ×2.5.

#### Binary (Option G)

Continuous gain from 16 to > 2560.

Screwdriver-adjustable front-panel rotary-gain-switch steps of 16, 32, 64, 128, 256, 512, and 1024.

Vernier (always active):

×1 to > ×2.5.

#### ACCURACY

±0.2% typical with gain-vernier potentiometer fully counterclockwise.

## STABILITY

**Time (200 hours)** ±0.02%.

**Temperature** ±0.005%/°C.

## DYNAMIC RESPONSE

### FREQUENCY RESPONSE

**(5-pole Butterworth)**

Dc to 3 kHz: ±5%.

Dc to 5 kHz: -3 ±1 dB.

### LINEARITY

±0.04% of full-scale output maximum deviation from the best straight line through zero.

### OVERLOAD RECOVERY

≤ 5 ms recovery from a "10 × full scale" input (up to the maximum normal-mode voltage allowed) to 0 V ±0.1% of the rated full-scale output.

## ZERO

### STABILITY

**Time (200 hours)**

±4 μV RTI ±200 μV RTO.

**Temperature**

±1 μV/°C RTI ±50 μV/°C RTO.

**Dynamic temperature (20°C**

**step change)**

±8 μV RTI ±400 μV RTO.

**Power-line change (30%)**

±0.5 μV RTI ±200 μV RTO.

### ADJUSTMENT RANGE

**(Affects amplifier input)**

More than ±40 mV RTI.

### CONTROLS

Coarse: 20-turn potentiometer.

Fine: 20-turn potentiometer with a nominal range of ±1 mV RTI.

## OUTPUT

### ISOLATION

The output is isolated by transformer from the input and power supply. The output-to-case voltage can be up to ±50 V dc or peak ac. The capacitance from output low to case and to power common is 0.22 μF.

### LINEAR RANGE

#### Voltage

Standard:

From -10.0 V to +10.0 V.

Option B: From 0 V to +5.0 V

(-0.8 V to +6 V maximum).

**Current:** 10 mA minimum.

### IMPEDANCE

At dc: ≤ 1 Ω.

At 5 kHz: ≤ 2 Ω.

### CAPACITIVE LOAD

The output will be stable under all normal signal conditions with a capacitive load of up to 0.02 μF.

### PROTECTION

No damage will occur with a continuous short on the output.

## EXCITATION VOLTAGE

### VOLTAGES AVAILABLE

5, 7, or 10 V dc (set at the factory).

**ACCURACY:** ±1%.

### OUTPUT CURRENT

≥ 100 mA with input power from 10.5 to 15 V dc, then decreasing linearly to 50 mA with input power of 32 V dc.

### Current Limit

Output current limit is 120 mA nominal with < 10% change over full temperature range.

### REGULATION

**Load:** ±0.1% no load to full load.

**Power:** ±0.05% for a line variation of 30%.

### NOISE

≤ 1 mV rms, 0.1 Hz to 1 MHz.

### TEMPERATURE COEFFICIENT

±0.005%/°C.

### ISOLATION

Excitation low is connected directly to input-power common.

## INPUT POWER

**RANGE:** ≥ 10.5 to ≤ 32 V dc.

### OVERVOLTAGE PROTECTION

+60 V: For 15 s maximum.

-50 V: Continuous.

### CURRENT

Model 416: 80 mA nominal, + excitation load + 1.2 times amplifier load.

**Noise:** The maximum current noise reflected back to the source is 5 mA peak as measured across a 1-Ω resistor in a 1-MHz bandwidth.

**Maximum fault current:** 230 mA.

## PHYSICAL PROPERTIES

### STORAGE TEMPERATURE

-60°C to +125°C.

### OPERATING TEMPERATURE

-25°C to +85°C.

### RELATIVE HUMIDITY

< 90% noncondensing.

### ALTITUDE

No limit with adequate heat dissipation.

### STATIC ACCELERATION

100 g.

### SHOCK (6-ms sawtooth):

100 g.

### VIBRATION

0.12" DA (5 to 55 Hz).

20 g (55 Hz to 2 kHz).

### EMI/RFI PROTECTION

Filters are provided in all connector leads.

### DIMENSIONS

Height	Width	Depth
50.8 mm (2")	28 mm (1.1")	101.6 mm (4")

### WEIGHT

**Conditioner-amplifier**

255 g (9 oz) nominal.

**Mating connector and hardware**

16 g (0.6 oz) nominal.

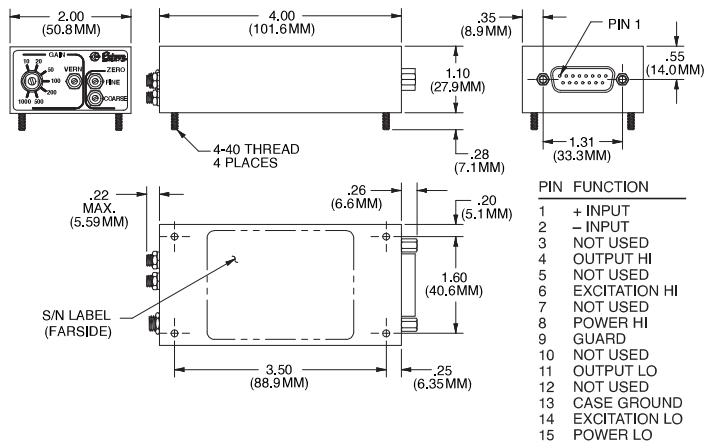
### MOUNTING FORCE

**(Four 4-40 studs):**

6 inch-pounds maximum.

### CONNECTOR

DAM-15P (Mate, DAM-15S with hood, cable clamp, and captive screws included).



8159 Engineer Road  
San Diego, CA 92111  
(858) 278-0600  
sales@ectron.com  
www.ectron.com